

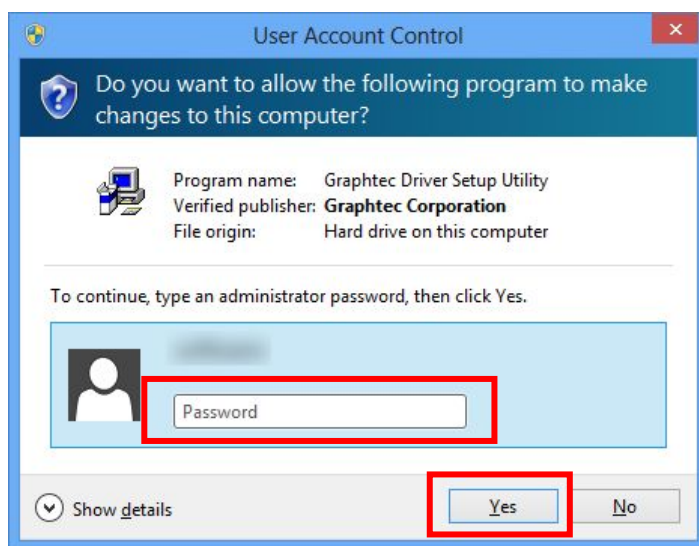
## **Procedure for installing the driver in the Windows 10 / 8.1 / 8**

This document describes the procedure to install the OPS662 driver to the USB port. In this document, the screen of Windows 8 is used.

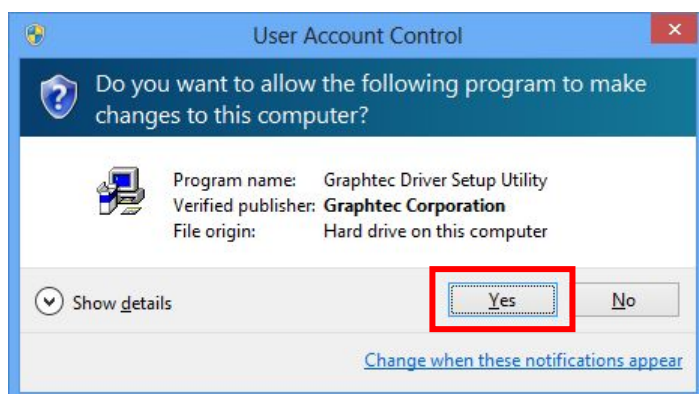
### **Notes:**

When the driver is installed, it is required permission of the administrator of the PC.

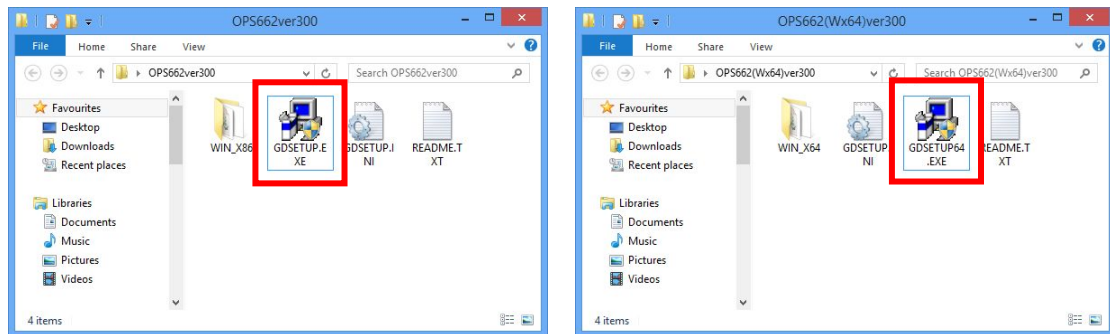
- When you are logged on to Windows by the account of user, the User Account Control dialog box appears as shown in the following. Click [Yes] button after you select an account of administrator and enter the password.



- When you are logged on to Windows by the account of administrator, the User Account Control dialog box appears as shown in the following. Click [Yes] button.

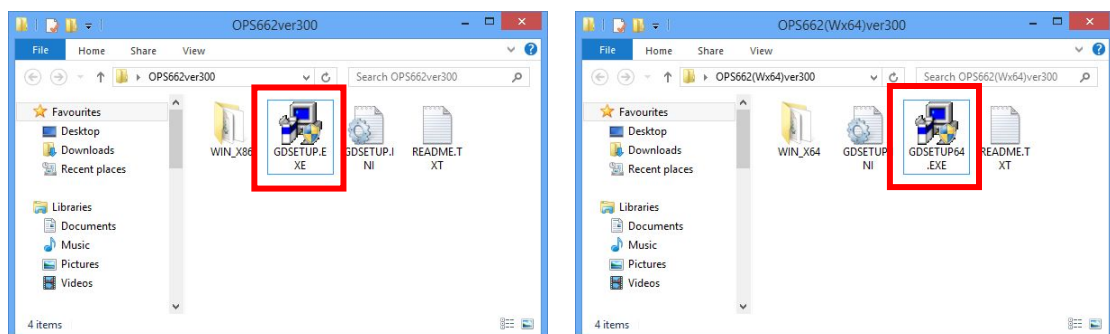


- Downloaded file is compressed in ZIP format. (Example of file name: OPS662v300.zip. The 340 varies by the version number.) The file is extracted to the folder of OPS662ver\*\*\* after it is unzipped.
- The GDSETUP is the installer of driver for the 32-bits OS. The GDSETUP64 is the installer of driver for the 64-bits OS. It is in the OPS662 ver300 folder. The installer needs to be executed after the downloaded file is unzipped. The files may appear on the explorer without extracting. The driver cannot be install in this condition.

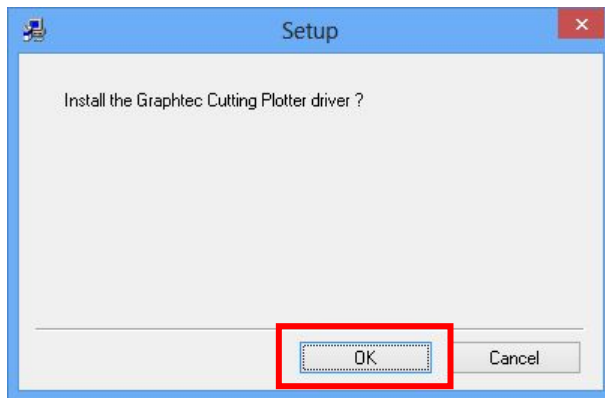


## Installing the driver

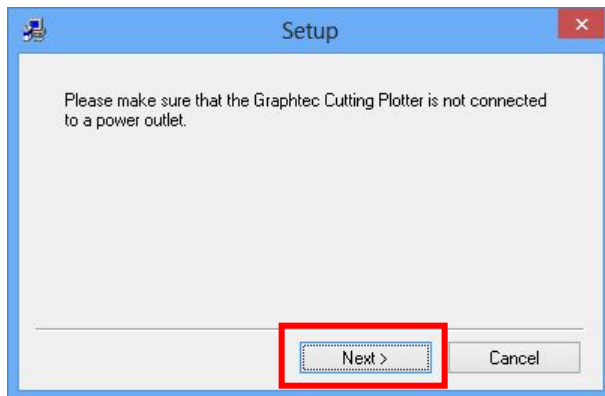
1. Do not connect the cutting plotter that will be used the PC via the USB cable.
2. Click the GDSETUP icon to install the driver when the 32-bits OS is used. Or, click the GDSETUP64 icon to install the driver when the 64-bits OS.



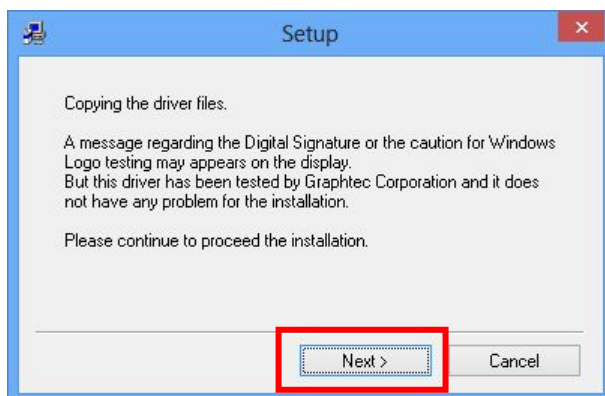
3. The Setup wizard appears. Click the [OK] button to start the installation of the driver.



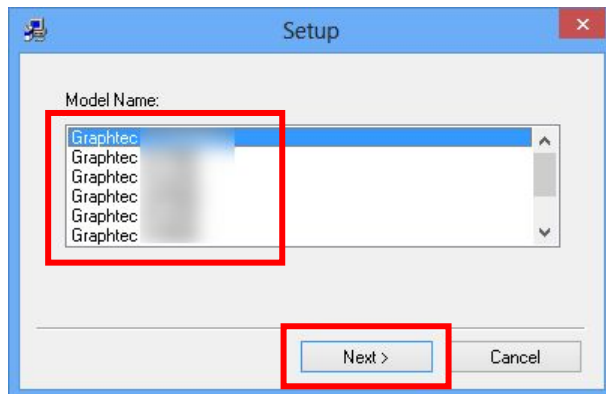
4. Make sure that the cutting plotter is not connected. Then click the [Next] button to continue.



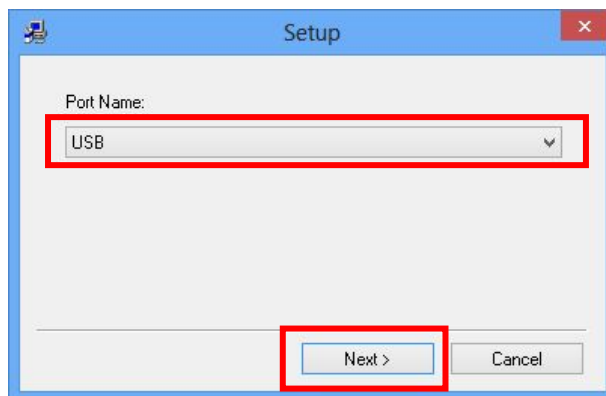
5. Click the [Next] button to continue.



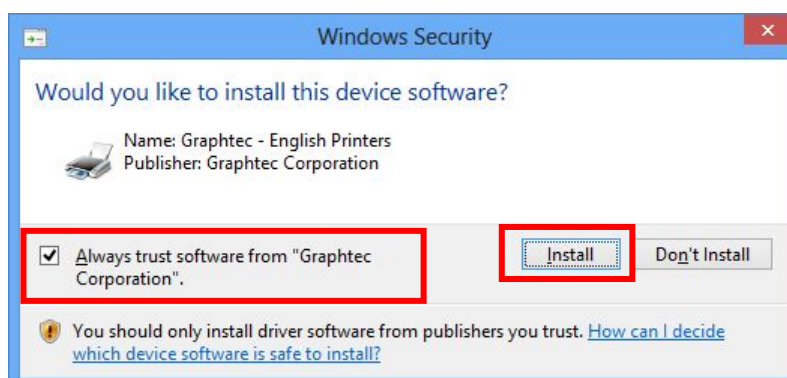
- Supported model name list appears. Select the device you want to use. Then click the [Next] button to continue.



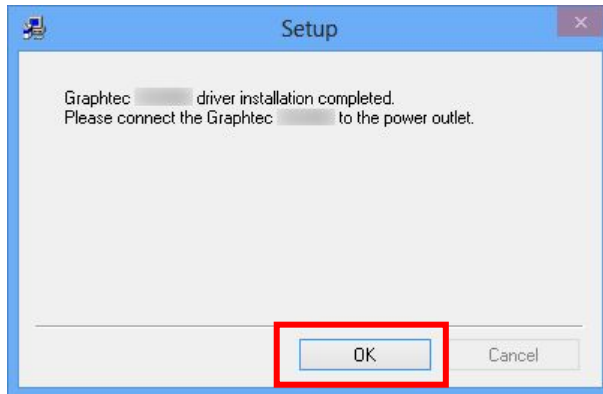
- Select the USB in the port name. Then click the [Next] button to continue.



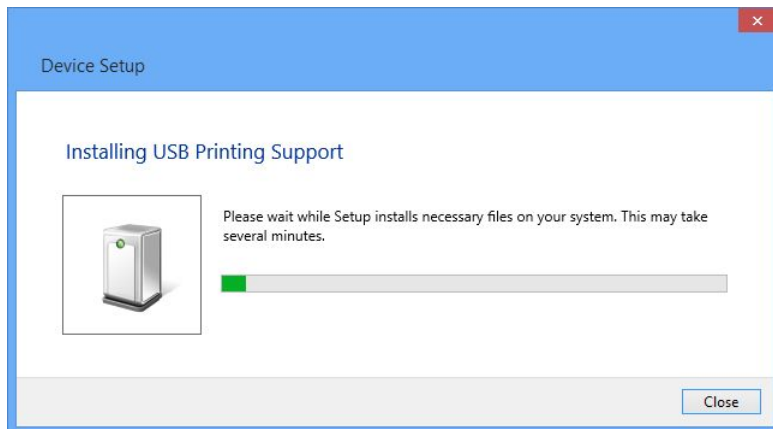
- Copying the file is started. When the Windows Security appears, make a check mark in the check box of the Always trust software from "Graphtec Corporation". Then click the [Install] button to continue. It may take a few minutes to copy the files.



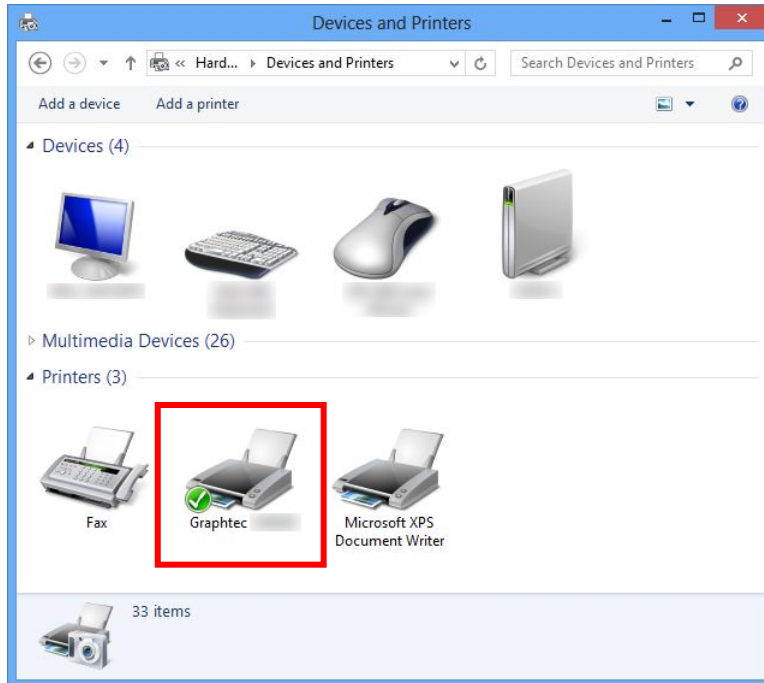
9. The following message appears after the driver installation is completed. Then click the [OK] button to continue.



10. Connect the cutting plotter to the PC using the USB cable, and turn on the power of the device. The installed driver will be configured to fit the device.
11. The Device Setup icon appears in the task-bar. The following dialog box appears after click the Device Setup icon. Wait for a while until the configuration of the driver is complete. This dialog may not be displayed.



12. The icon of the cutting plotter appears in the "Device and Printers" property window after the configuration of the driver is completed. The "Device and Printers" icon is available in the "Hardware and Sound" group on the Control Panel window. The Control Panel is available on the start menu of the Windows OS.



end