

GRAPHTEC

Extensive lineup adapted to a wide variety of applications

Instrument Product Line-up

midi LOGGER
HV GL2000 **NEW**



midi LOGGER
GL980 **NEW**



midi LOGGER
GL240



DATA PLATFORM
GL7000



midi LOGGER
GL840 Series



PetitLOGGER
GL100 Series



www.graphtecamerica.com/instruments

Data Logger

Isolated input, multi-channel logger

midi **LOGGER**

GL840 series



Multi-input model
GL840-M

Max. 10ms sampling	Σ type A/D converter	Temp. Humidity, Voltage, Pulse/Logic	Up to 200 channels	LAN USB SDcard
---------------------------------	-----------------------------------	---	---------------------------------	----------------------

- Multifunction analog inputs
 - Voltage 20 mV to 100 V
 - TC: R, S, B, K, E, T, J, N, W (WR5-26)
 - Temp. RTD: Pt100, Pt1000 (IEC750), JPt100 (JIS)
 - Humidity 0 to 100% (the B-530 option is required)
- Pulse/Logic inputs
 - Pulse 4ch (Accumulating, Instant, or Rotation)²
 - Logic 4ch²
- Flexible input system for wide array of applications
- WLAN (option) capable for remote monitoring
- Maximum sampling rate up to 10 ms⁻³
- Extended memory capacity using SD memory card
- Combining GL100 and GL840 by using WLAN

10 channel handy type logger

midi **LOGGER**

GL240

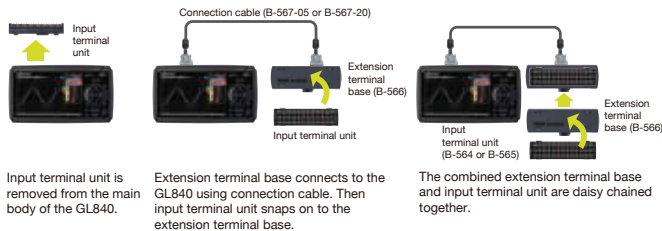


Max. 10ms sampling	Σ type A/D converter	Temp. Humidity, Voltage, Pulse/Logic	10 channels	USB SDcard
---------------------------------	-----------------------------------	---	----------------	---------------

- Multifunction analog inputs
 - Voltage 20 mV to 100 V
 - TC: R, S, B, K, E, T, J, N, W (WR5-26)
 - Humidity 0 to 100% (the B-530 option is required)
- Pulse/Logic inputs
 - Pulse 4ch (Accumulating, Instant, or Rotation)²
 - Logic 4ch²
- Multifunction input in 10 isolated channels
- Maximum sampling rate up to 10 ms⁻³
- Extended memory capacity using SD memory card
- WLAN (option) capable for remote monitoring
- Combining GL100 and GL240 by using WLAN

*1: WLAN is available in limited regions. *2: Select either Pulse or Logic input, and use the optional input/output cable (B-513). *3: Sampling rate is limited by the number of channels to be used.

■ Expandable up to 200 channels in GL840



- Support the GS sensors in GL840 Temperature, acceleration, and others are able to measure using the GL sensors.



■ Combining GL100-WL and GL240/GL840

GL100-WL can now be connected to the GL240 or GL840 as a remote sensor.



PetitLOGGER **GL100** series

- Supports a wide array measurement by exchanging the sensor
- Connecting to the PC or smart device via a WLAN
- Driving by a battery or USB bus power



GL100-WL
(with wireless LAN)

GL100-N
(without wireless LAN)

Wireless LAN GL100-WL	USB Interface	microSD memory card	Sensor, input terminal, adapter 7types	PC	Smart device GL100-WL
-----------------------------	------------------	------------------------	---	----	--------------------------

*4: WLAN is available in limited regions.

GS sensors

The sensor is connected to the GS sensor port of the GL840 and GL100.

Sensors			
Temp./Humidity GS-TH Temp.: -20 to 85°C Humidity: 0 to 100% RH Dew-point temp., Accumulated temp.	Acceleration/Temp. GS-3AT Try-axial: max. 10 G Temp.: -10 to 50°C * It varies by the sensor.	Carbon dioxide (CO ₂) GS-CO2 CO ₂ concentration: 0 to 9999 ppm	Illuminance/UV GS-LXUV Illuminance: 0 to 200 klx UV intensity: 0 to 30 mW/cm ² Accumulated illuminance and UV
Dual port adapter		Input terminal / Adapter	
Dual port adapter GS-DPA Connects two sensors of GS-TH, GS-CO2, GS-LXUV.	Thermistor terminal GS-4TSR 4ch Temp.: -40 to 120°C * It varies by the sensor. 4ch Logic or Pulse	Current sensor adapter GS-DPA-AC 50, 100, 200 A 2ch Single-phase, three-phase power system	Voltage/Temp. terminal GS-4VT 4ch Voltage: max. 50 V 4ch Temp.: TC, K or T 4ch Logic or Pulse
Extension cable Extension cable for input module GS-EXC Cable length: 1.5 m	Thermistor sensor Normal type GS-103AT-4P Ultrathin type GS-103JT-4P	AC current sensor 50 A 100 A 200 A	

Data Logger / Data Acquisition

High-speed High-Voltage Isolated 4 channel Data Logger

midi LOGGER **HV** GL2000 **NEW**



Simultaneous sampling Isolated	CAT III	Max. 1MS/s (1μs)
Voltage Temp., Humidity, Pulse/Logic	Built-in RAM 4MS/ch	Built-in Flash memory 4GB
USB SDcard		

- Multifunction analog inputs
 - Voltage** 20 mV to 1000 V DC, 1-5 V DC, 10 mV to 1000 V rms
 - Temp.** TC: K, J, E, T, R, S, B, N, W (WR5-26)
 - Humidity** 0 to 100% (the B-530 option is required)
- Pulse/Logic inputs
 - Pulse** 4 channels (*5)
Accumulating, instant or RPM
 - Logic** 4 channels (*5)

- 4ch High Speed Simultaneous Sampling
- CAT III 600V Compatible
- Measure AC 600 V Measurement with True-rms
- Built-in High-capacity RAM (4 M sampling/ch) and Flash memory (4 GB)
- Large Easy-to-read 7-inch LCD

*5: Select either Pulse input or Logic input, and use the optional input/output cable for GL (B-513 option).

Isolated simultaneous 8 channel data logger

midi LOGGER **GL980** **NEW**



Simultaneous sampling Isolated	Max. 1MS/s (1μs)	Voltage Temp., Humidity, Pulse/Logic
Built-in RAM 4MS/ch	Built-in Flash memory 4GB	USB SDcard

- Multifunction analog inputs
 - Voltage** 20 mV to 500 V DC, 1-5 V DC, 10 mV to 250 V rms
 - Temp.** TC: K, J, E, T, R, S, B, N, W (WR5-26)
 - Humidity** 0 to 100% (the B-530 option is required)
- Pulse/Logic inputs
 - Pulse** 4 channels (*5)
Accumulating, instant or RPM
 - Logic** 4 channels (*5)

- 8ch High speed simultaneous sampling
- Includes 500 V measurement with 16-bit A/D converter
- Equipped with true-rms measurement
- Large built-in RAM (4 M sampling/ch) and built-in Flash memory (4 GB)
- Large easy-to-read 7-inch LCD

Modular Type Data Acquisition Unit **DATA PLATFORM GL7000**





Hi-speed 1MS/s	Multi-channels max. 112ch	High voltage 1000 V	Huge memory capacity 128GB SSD
-------------------	------------------------------	------------------------	-----------------------------------



Supports the GL-Connection software
Allows to use with other units of GL series

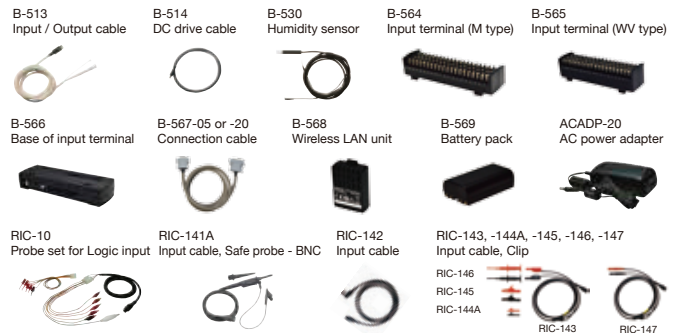
* Example, the option of 6 modules and the display are installed.

Voltage Module	Voltage/Temperature Module	High speed Voltage Module	High Voltage Module	DC Strain Module
 GL7-V	 GL7-M	 GL7-HSV	 GL7-HV	 GL7-DCB
Voltage 10ch/unit	Voltage, Temp. 10ch/unit	High speed 4ch/unit	Voltage 2ch/unit	Strain, Voltage 4ch/unit
Max. 1kS/s (1ms)	Max. 100S/s (10ms)	Max. 1MS/s (1μs)	Max. input voltage 1000V	Strain gauge, Sensor
Simultaneous sampling Isolated	Type A/D converter Isolated	Simultaneous sampling Isolated	Max. 1MS/s (1μs) Isolated	Max. 100kS/s (10μs) Isolated
Charge Module	Voltage Output Module	Logic/Pulse Module	SSD Module	Display Module
 GL7-CHA	 GL7-DCO	 GL7-L/P	 GL7-SSD	 GL7-DISP
Charge, Voltage 4ch/unit	Output voltage 8ch/unit	Logic/Pulse 16ch/unit	128 GB storage	
Charge, IEP Sensor (TEDS)	Max. 100kS/s (10μs)	Max. 1MS/s (1μs)		
Max. 100kS/s (10μs) Isolated	Captured data, Arbitrary waveform	Simultaneous sampling		

* Optional input or output cable is required.

Options and Accessories

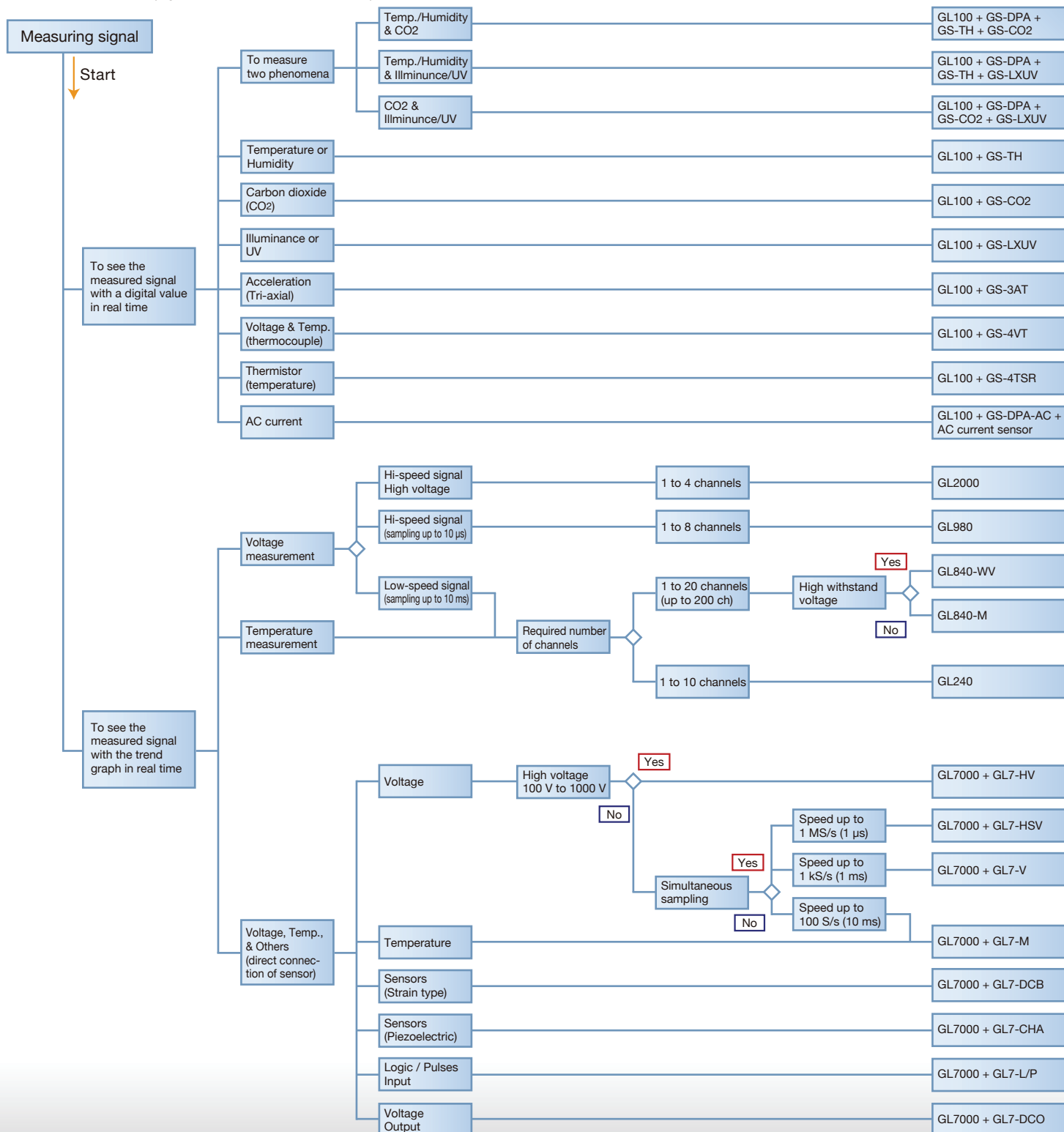
Model	Item	GL240	GL840 series	GL2000/980	GL7000 series
B-513	Input/Output cable for GL series	Yes	Yes	Yes	Yes
B-514	DC drive cable	Yes	Yes	Yes	N/A
B-530	Humidity sensor	Yes	Yes	Yes	Yes
B-564	Input terminal (M type)	N/A	Yes	N/A	N/A
B-565	Input terminal (WV type)	N/A	Yes	N/A	N/A
B-566	Base of input terminal	N/A	Yes	N/A	N/A
B-567-05, -20	Connection cable	N/A	Yes	N/A	N/A
B-568	Wireless LAN unit	Yes	Yes	N/A	N/A
B-569	Battery pack	Yes	Yes	Yes	N/A
ACADP-20	AC power adapter	Yes	Yes	N/A	N/A
RIC-10	Probe set for Logic input	N/A	N/A	N/A	Yes
RIC-141A	Input cable, Safe probe - BNC	N/A	N/A	Yes	Yes
RIC-142	Input cable, BNC - BNC	N/A	N/A	Yes	Yes
RIC-143	Input cable, Banana - BNC	N/A	N/A	Yes	Yes
RIC-144A	Clip, Alligator (small size) for RIC-143, 147	N/A	N/A	Yes	Yes
RIC-145	Clip, Alligator (middle size) for RIC-143, 147	N/A	N/A	Yes	Yes
RIC-146	Clip, Grabber for RIC-143, 147	N/A	N/A	Yes	Yes
RIC-147	Input cable, Banana - BNC (High voltage)	N/A	N/A	Yes	Yes



Product selection guide ▶▶▶

There are a wide variety of measurement as faster signal in the vehicle and equipment test, or slower signal like the temperature in the environment test. The device to capture the signal needs to be selected to fit the required application.

* Please refer to the inside page of this document for details on each product.



• Due to the possibility of equipment or PC failure, the data files on the instrument will not be guaranteed to be held on the memory.

Please make a backup of data whenever possible to avoid data loss.

• Brand names and product names listed in this brochure are the trademarks or registered trademarks of their respective owners.

• Items mentioned are subject to change without notice. For more information about product, please check the web site or contact your local representative.



For using equipment in correctly and safely

• Before using it, please read the user manual and then please use it properly in accordance with the description.

• To avoid malfunction or an electric shock by current leakage or voltage, please ensure a ground connection and use according to the specification.

GRAPHTEC

Graphtec America, Inc.
17462 Armstrong Avenue
Irvine, CA 92614

WEBSITE: www.graphtecamerica.com/instruments

