

# How to update the firmware for Cutting Plotters

The firmware of Cutting plotters is able to update by the UPDATE.exe.

This instruction is explaining by based on the WINDOWS 10 menus.

## 1. Preparations before the firmware update

- (1) Unzip the firmware update file with your PC.
- (2) The following files are contained in the firmware update files for each model.

Model	Firmware file	Update EXE file	DLL file	Manual file
<b>CE6000 series</b>	CE6000_V***.x	UPDATE.EXE	GITKPRNP.DLL	How to update firmware for Cutting plotters.pdf (This instruction manual.)
<b>CE6000-120AP</b>	CE6000AP_V***.x			
<b>CE6000Plus series</b>	CE6000Plus_V***.x			
<b>FC8600</b>	FC8600_V***.x			
<b>FCX2000</b>	FCX2000_V***.x			
<b>FCX4000</b>	FCX4000_V***.x			
<b>CE LITE-50</b>	CELITE_V***.x			
<b>FC2250</b>	FC2250_V***.x			
<b>FC4500/FC4510/FC4550</b>	FC4500_V***.x			

(The “\*” of firmware file name is showing the version number.)

Note: The plotter will not be guaranteed if this "UPDATE.EXE" and other files are edited by the editing software.

Do not edit the "UPDATE.EXE" and other files.

## 2. How to update the firmware

Confirm the Cutting Plotter and the PC are connected via the USB cable.

And confirm the Cutting Plotter is ready to use via the USB port.

(The firmware is not able to update via the LAN port.)

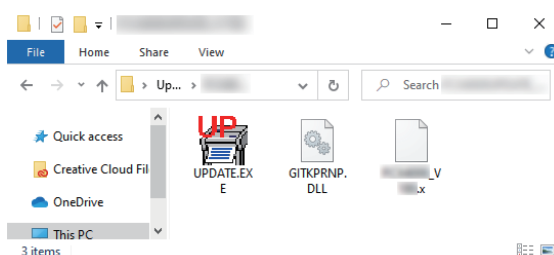
Please exit from the Cutting Software when the Cutting Software is running on the PC.

When the Cutting Software is running, the firmware update is not able to perform correctly.

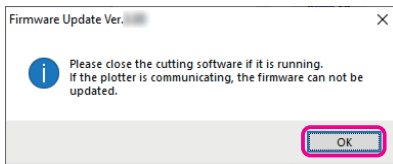
The updating procedure is different by each models, update the firmware by the procedure below.

### CE6000 series/CE6000-120AP/CE6000Plus series/FC8600 series/FCX2000 series/ FCX4000 series/CE LITE-50

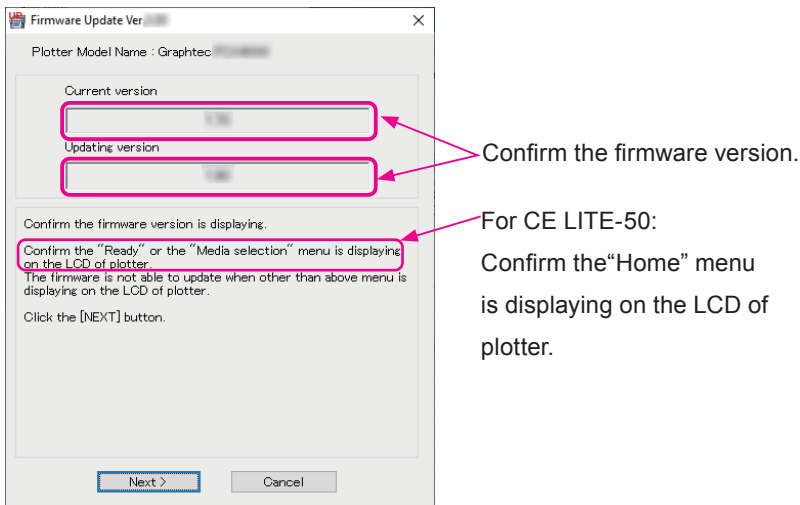
- (1) Turn on the power for the cutting plotter.  
Confirm the “Ready” or the “Media selection” menu is displaying on the LCD of plotter.  
(For the CE LITE-50: Confirm the “Home” menu is displaying on the LCD of plotter.)
- (2) Double click the “UPDATE.EXE” to run the updating software.



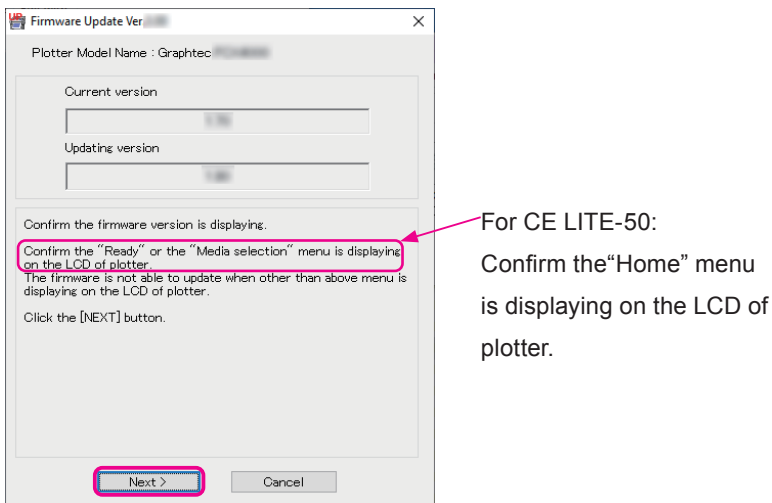
- (3) The following menu is shown when the “UPDATE.EXE” started.  
Click the OK button after confirmed the Cutting Software is not running.



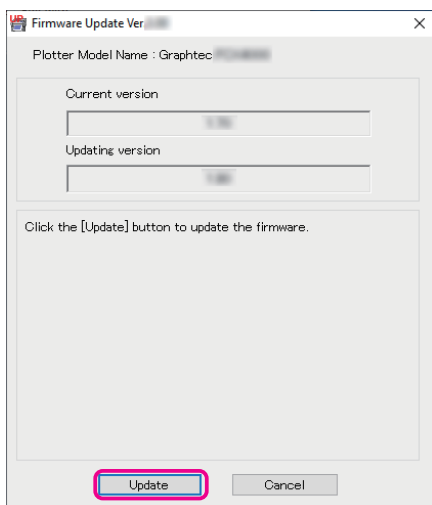
- (4) The following menu is displayed.



- (5) Confirm the current firmware version of cutting plotter and the updating firmware version at above menu. The error will be displayed if these firmware are not matching with the cutting plotter connected.  
Confirm the connecting plotter and firmware if the error was displayed.
- (6) Confirm the “Ready” or the “Media selection” menu is displaying on the LCD of plotter.  
(For the CE LITE-50: Confirm the “Home” menu is displaying on the LCD of plotter.)
- (7) Press the NEXT button when if the “Ready” or the “Media selection” menu is displaying on the LCD of plotter.  
(For the CE LITE-50: Confirm the “Home” menu is displaying on the LCD of plotter.)



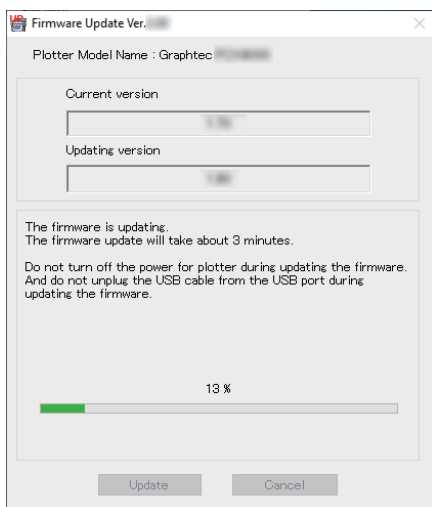
- (8) Press the Update button.



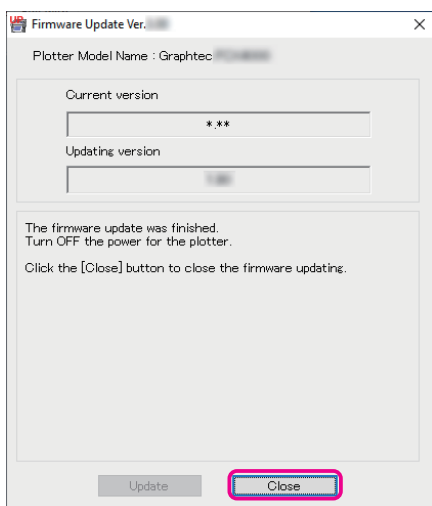
- (9) The following menu is displayed during updating the firmware.

Don't turn OFF the power for the cutting plotter when the firmware is updating.

Don't unplug the USB cable from the PC and the cutting plotter when the firmware is updating.



- (10) The following menu is displayed when the firmware updating is finished.



(11) Press the Close button to exit the Firmware Update software.

(12) Turn off the power for the cutting plotter.

(The CE LITE-50 will be initialized automatically after the firmware was updated, therefore CE LITE-50 does not need this step.)

(13) Turn on the power of cutting plotter and then confirm the version of firmware at LCD.

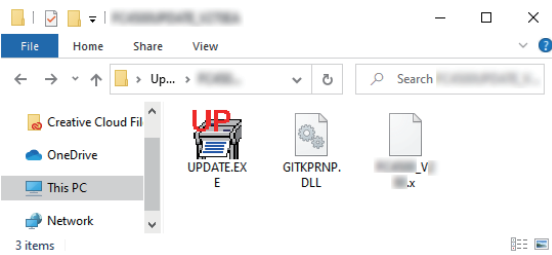
The firmware version is displayed when the cutting plotter is initializing.

(The CE LITE-50 does not display the firmware version when it is initializing. Confirm the firmware version by the following menu. "MENU" -> "ADVANCE" -> "FIRMWARE VERSION" )

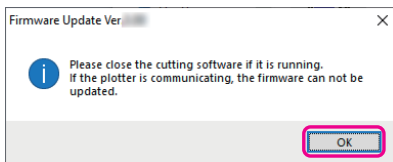
End

**FC2250/ FC4500/FC4510/FC4550**

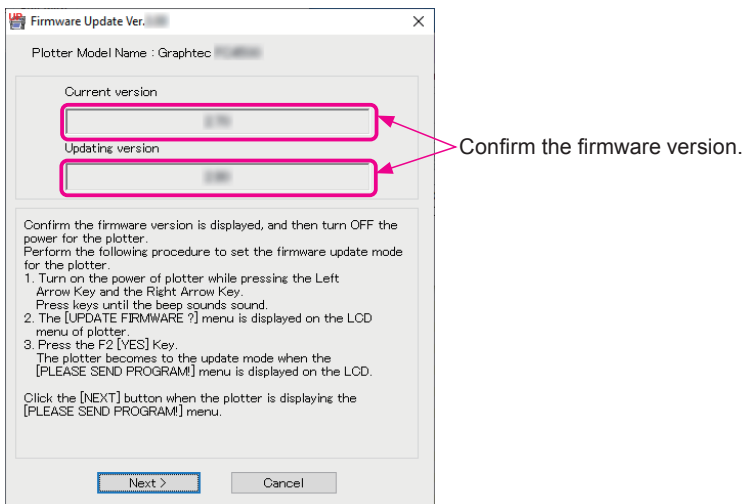
- (1) Turn on the power for the cutting plotter.
- (2) Double click the "UPDATE.EXE" to run the updating software.



- (3) The following menu is shown when the "UPDATE.EXE" started.  
Click the OK button after confirmed the Cutting Software is not running.



- (4) The following menu is displayed.

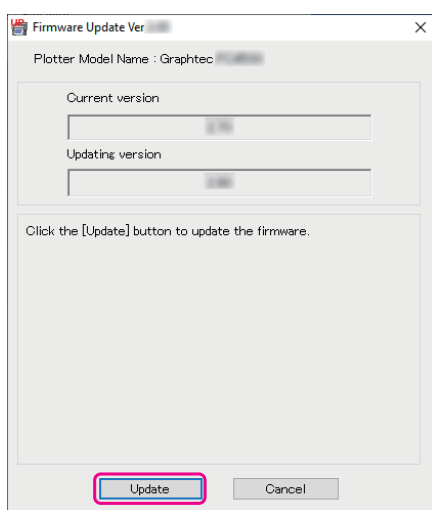


- (5) Confirm the current firmware version of cutting plotter and the updating firmware version at above menu. The error will be displayed if these firmware are not matching with the cutting plotter connected.  
Confirm the connecting plotter and firmware if the error was displayed.
- (6) Turn OFF the power for the cutting plotter when the firmware version is confirmed.
- (7) Turn ON the power for the plotter while pressing the Left Arrow Key and the Right Arrow Key.  
Press keys until the beep sounds sound.
- (8) "UPDATE FIRMWARE ?" is displayed on the LCD menu.
- (9) Press the F2 Key (YES).
- (10) "PLEASE SEND PROGRAM" is displayed on the LCD menu.

(11) Press the NEXT button.



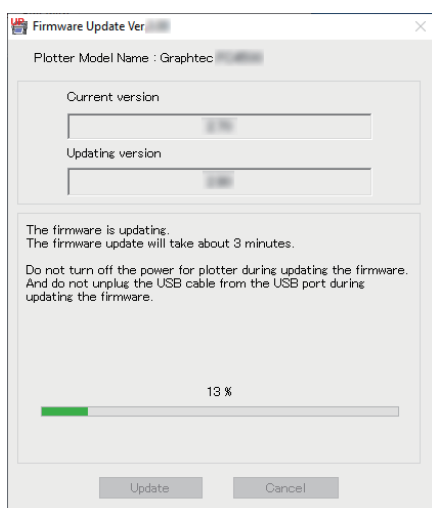
(12) Press the Update button.



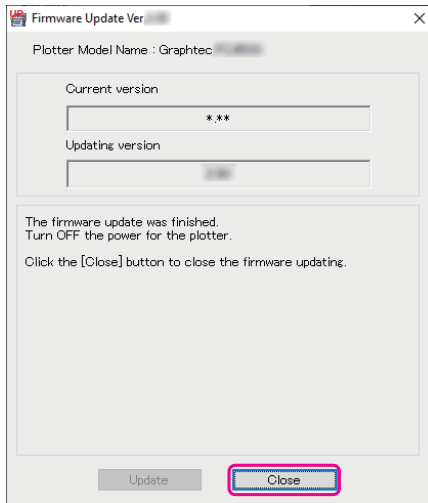
(13) The following menu is displayed during updating the firmware.

Don't turn OFF the power for the cutting plotter when the firmware is updating.

Don't unplug the USB cable from the PC and the cutting plotter when the firmware is updating.



- (14) The following menu is displayed when the firmware updating is finished.



- (15) Press the Close button to exit the Firmware Update software.
- (16) Turn off the power for the cutting plotter.
- (17) Turn on the power of cutting plotter and then confirm the version of firmware at LCD.
- The firmware version is displayed when the cutting plotter is initializing.

End