

## Updating the System Firmware

This document describes how to update the system firmware in the cutter/plotter.

### Tools

- (1) Firmware file: FC4500vxxxm.std
- (2) Utility software for transferring the firmware file: SEND.exe
- (3) Windows PC that the Windows driver for FC4500 (OPS662) is already installed.
- (4) USB Cable.

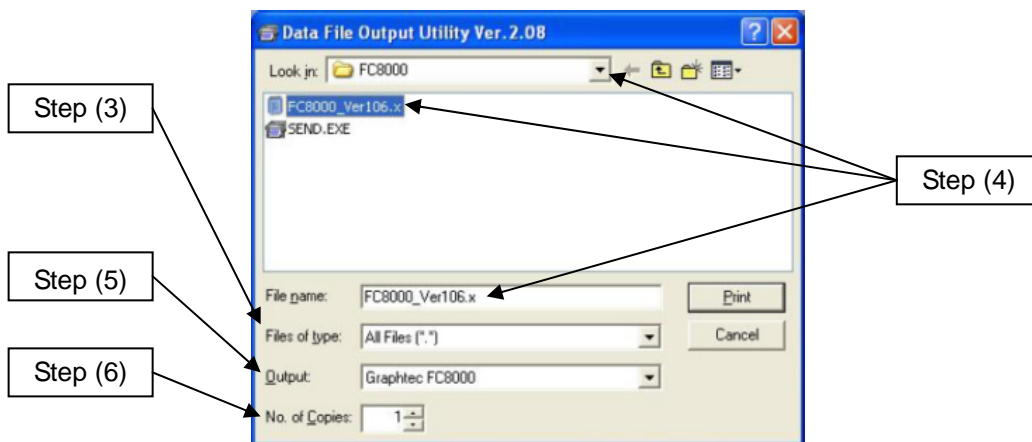
### Preparing the computer

It is necessary to install the Windows driver before start to update the firmware.

- (1) Copy the firmware file and the utility software (send) to the working folder.
- (2) Start the utility software for transferring the firmware file by double-clicking the icon of the SEND.

The following figure is displayed.

**Note:** This figure shows the case of FC8000



- (3) Change the "Files of type:" to the "All Files [\*.\*)" using the pull down menu.
- (4) Select the firmware file. Use the pull down menu of the "Look in:" to specify the location of the file. Select the firmware file from the file list or enter the firmware file name to the "File Name:" column.
- (5) Select the "Output:" to the model of the cutter/plotter that is the Graphtec FC4500 in this case using the pull down menu. When the Windows driver is not installed, the model of the cutter/plotter is not displayed.
- (6) Set the "No. of Copies:" to the "1" using the pull down menu.

## Preparing the cutter/plotter

- (1) Set the DIP-switch on the main board to the “Normal mode” or the “Adjustment mode”.
- (2) Press the RIGHT ARROW key and the LEFT ARROW key simultaneously while the power of the cutter/plotter is turned on. When buzzer is sounded, release the keys.
- (3) The following message is displayed in the LCD.

UPDATE FIRMWARE ?	
YES	NO

Select “YES” pressing the F2 key.

- (4) The following message is displayed.

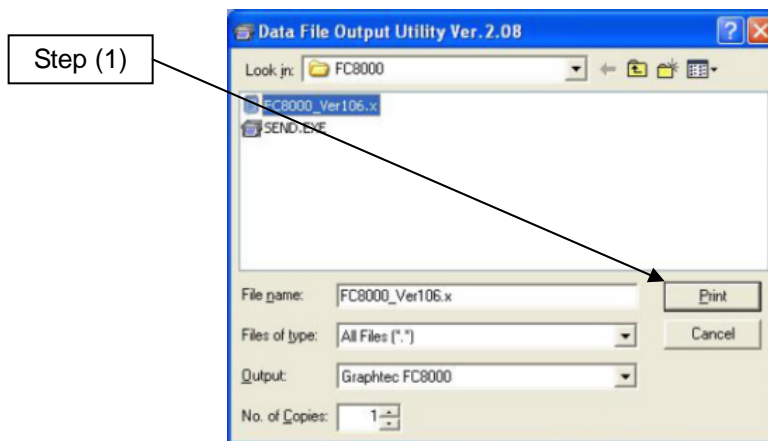
UPDATING FIRMWARE
DO NOT SWITCH OFF

The following menu is displayed in a few seconds.

PLEASE SEND PROGRAM!
USB

## Updating the system firmware

- (1) Click the “Print” button in the utility software for transferring the file to the cutter/plotter.



**Note:** This figure shows the case of FC8000

- (2) The following message is displayed in the cutter/plotter after the data transfer is started.

PROGRAM RECEIVING
xxx KB COMPLETE

- (3) As the firmware data is successfully transferred, the number of transferred bytes shown on the LCD increases. When the transfer is completed, the display automatically changes to the following message, and the system begins writing to flash memory.

FLASH MEMORY CLEAR

FLASH MEMORY WRITE

- (4) The following message is displayed after the updating firmware process has been completed.

COMPLETED

POWER OFF THEN ON !

Then turn off the power of the cutter/plotter.

- (5) Set the DIP-switch on the main board to the "Normal mode" when it is set to the "Adjustment mode".

If the adjustment is required, set the DIP-switch on the main board to the "Adjustment mode". Turn on the power of the cutter/plotter and then check the firmware version that is displayed in the initialization process.