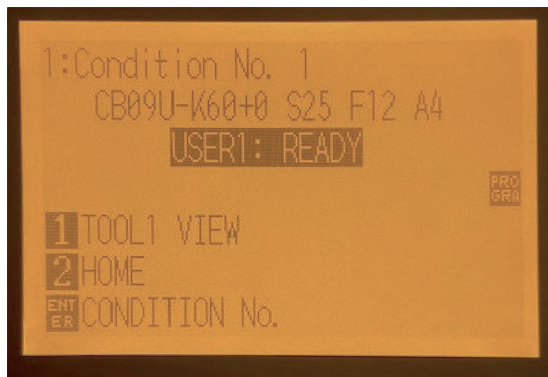


FC9000 SERIES CUTTING WINDOW FILM

GRAPHTEC RECOMMENDED SETTINGS FOR WINDOW FILM ON FC9000

Using the **Graphtec Loupe** (PM-CT-001) to set blade length, we can achieve consistent results with multiple cutters.



CONTROL PANEL SETTINGS:

Set the correct blade under
TOOL to: **CB 09U-K60**

- Use a **FORCE** of **9-13** starting with **9**.

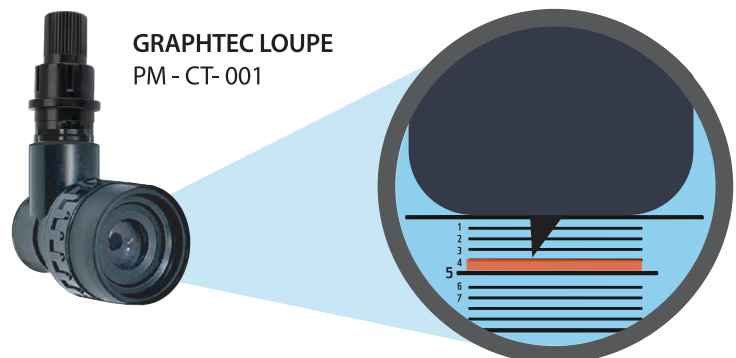
BLADE LENGTH ADJUSTMENTS

Blade Length needs to be adjusted to perform optimal cut.
Test cuts are required to determine the optimal blade length for window film.

ADJUSTING BLADE LENGTH USING LOUPE:

Set **Blade Length** to **0.4mm** indicated by the #4 line as viewed in loupe window.

If end user does not have a loupe to adjust blade length, the blade should be set to the 4th marker line.



GRAPHTEC LOUPE
PM - CT - 001

FC9000 SERIES

CUTTING WINDOW FILM

ADJUSTING BLADE LENGTH WITHOUT LOUPE:

Adjust the blade length by turning the blade-length adjustment knob.



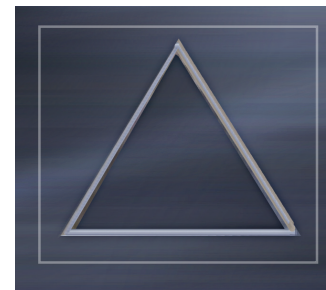
- Turn the knob clockwise (A) to extend the blade.
- Turn the knob counte-clockwise (B) to retract the blade.

When the knob is turned by one scale unit, the blade moves approximately 0.1mm.
One full turn of the knob moves the blade approximately 0.5mm.

PERFORMING TEST CUTS:

After setting blade length, perform a test cut and look for an outline of a triangle on the backing.

- The test cut should allow you to weed the square. Increase the force if needed.
The desired test cut should show the silhouette of a triangle on the backing, but not cut through backing



- Cut a strip the width of the material and height of 1.5"
- If there are inconsistent cuts, make sure the blade length is set up properly. There should be space between blade holder tip and material while blade is down.

